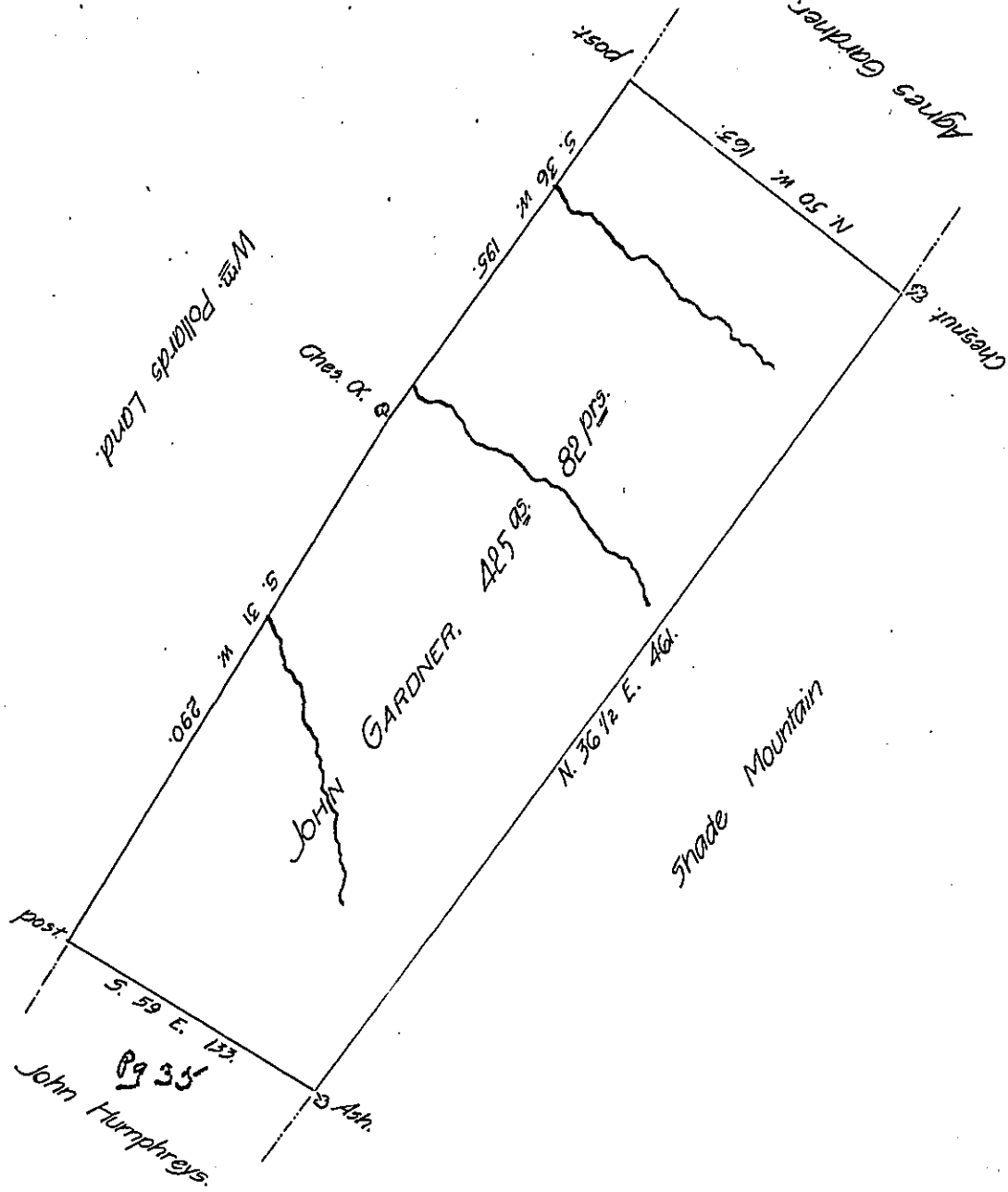


287-107



Situate in Huntingdon County, Shirley Township, adjoining Pollards Land on the West, Shade Mountain on the East & John Humphreys on the South, Containing 425 Acres & 82 perches & the usual Allowance of Six per Cent for Roads. Surveyed the 20<sup>th</sup> Day of August, 1794. In pursuance of a Warrant dated the 2<sup>d</sup> day of June, 1794.

John Canan, D.S.

To Daniel Brodhead, Esq.,  
Surveyor General.

IN TESTIMONY that the above is a copy of the original remaining on file in the Department of Internal Affairs of Pennsylvania, made conformably to an Act of Assembly approved the 16th day of February, 1833, I have hereunto set my Hand and caused the Seal of said Department to be affixed at Harrisburg, this eleventh day of February 1908.

*Henry Houch*  
Secretary of Internal Affairs.